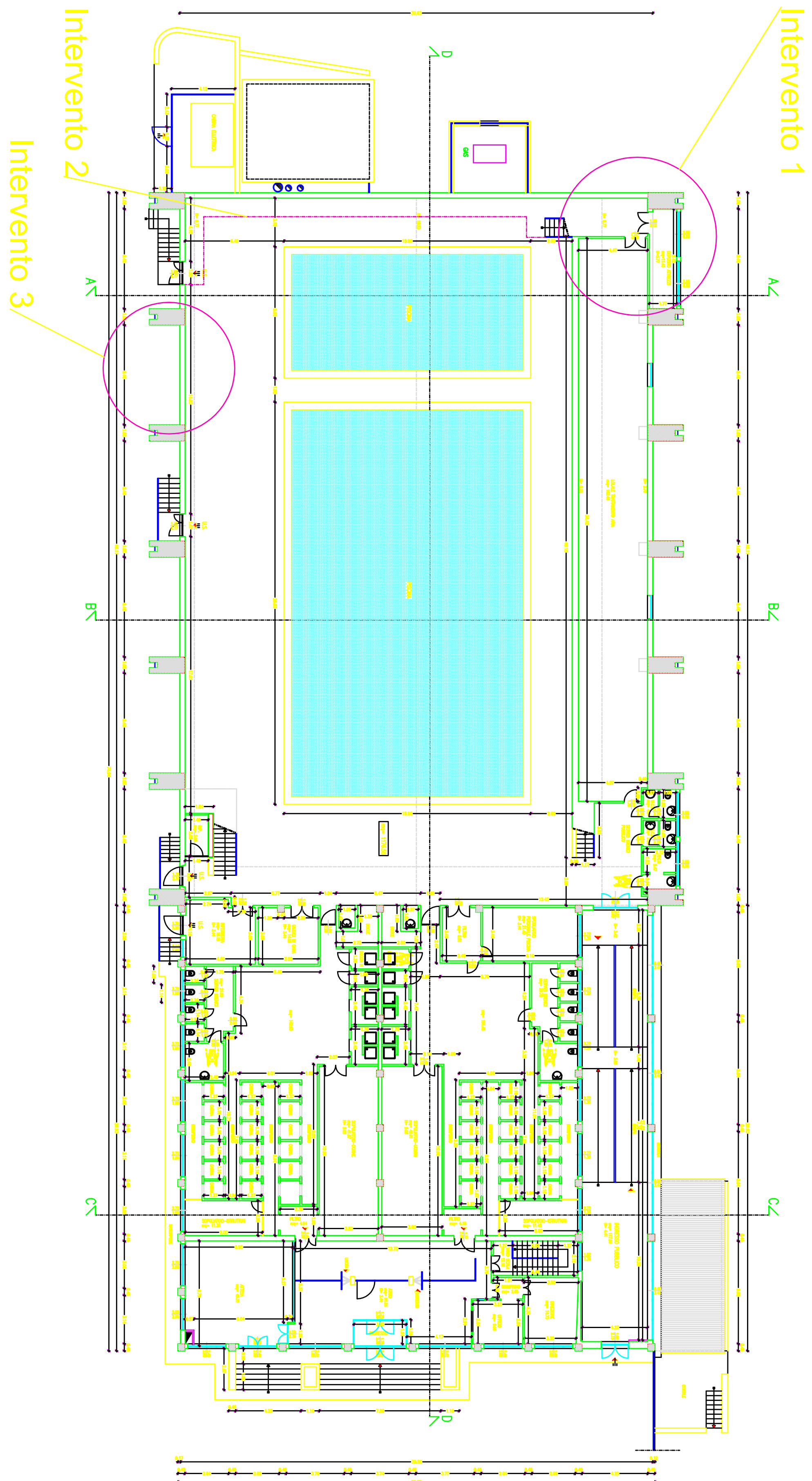
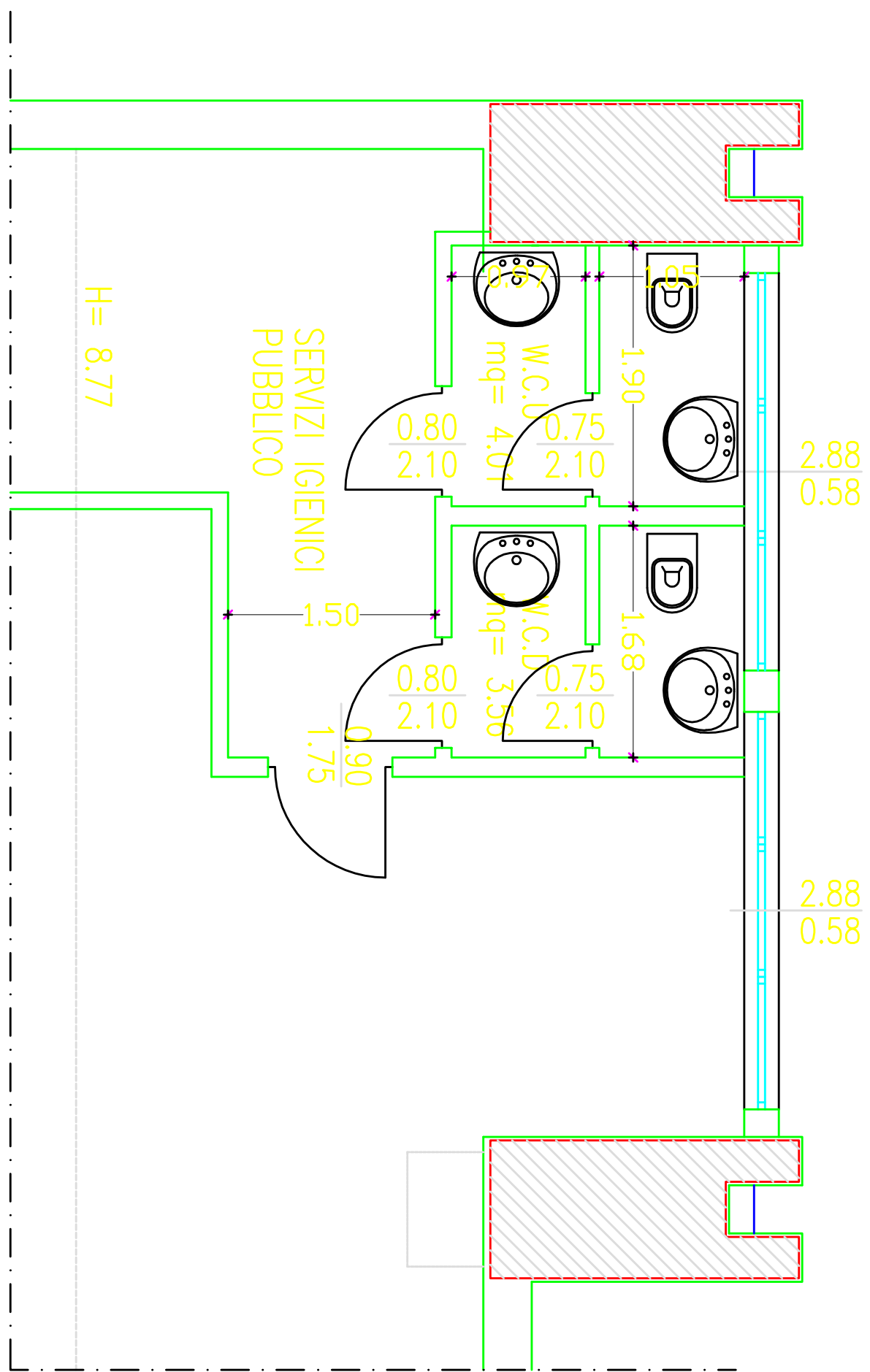


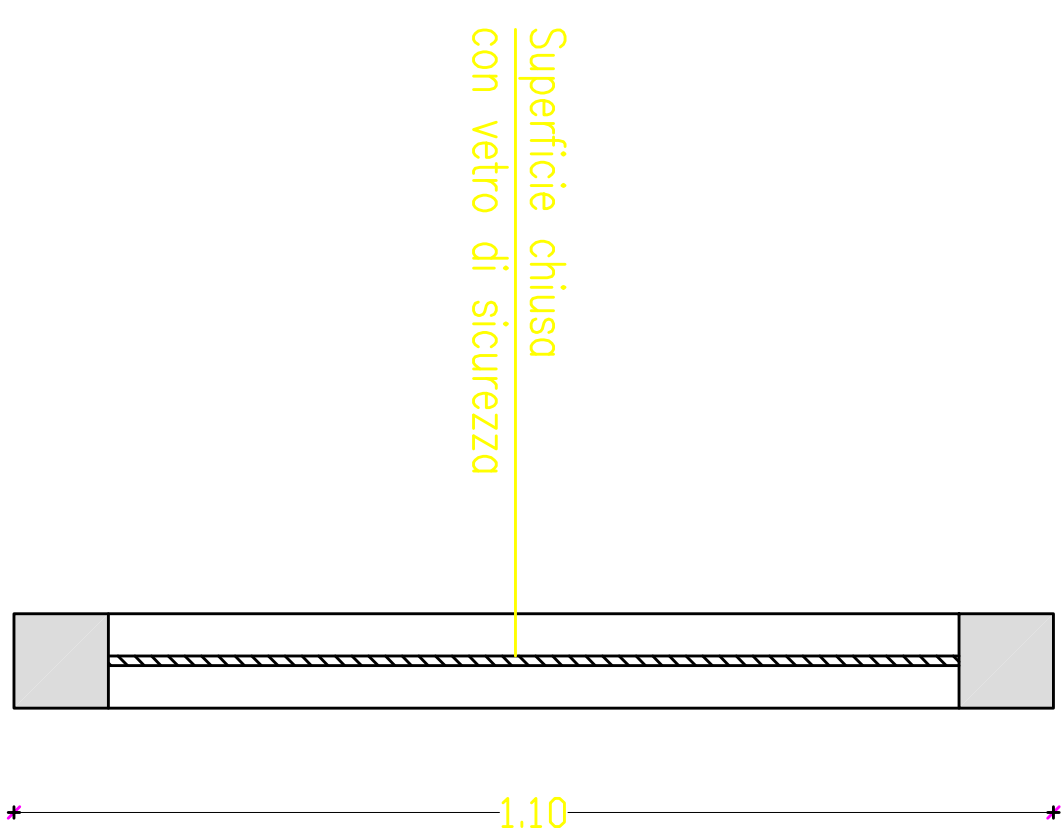
PIANTA PIANO TERRA (1:200)



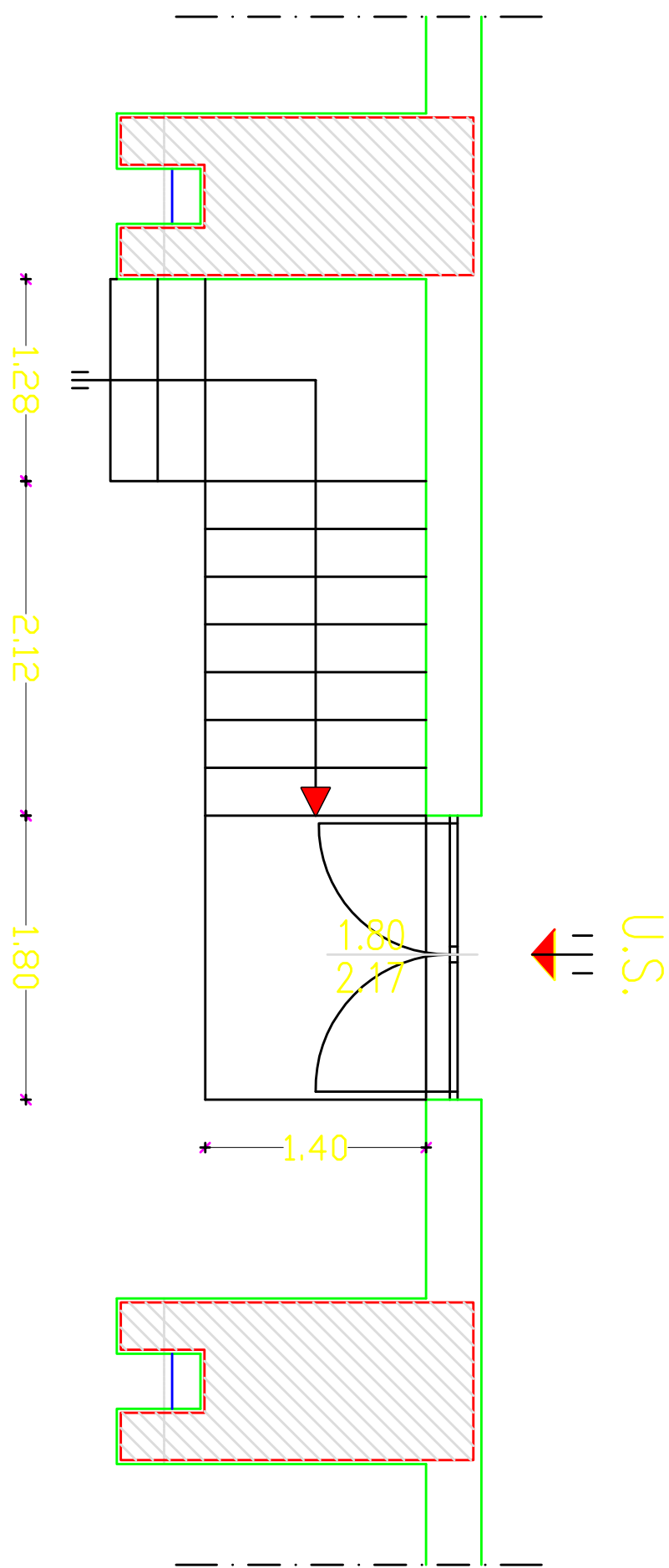
Intervento 1 (1:100)
Nuovi servizi igienici per il pubblico



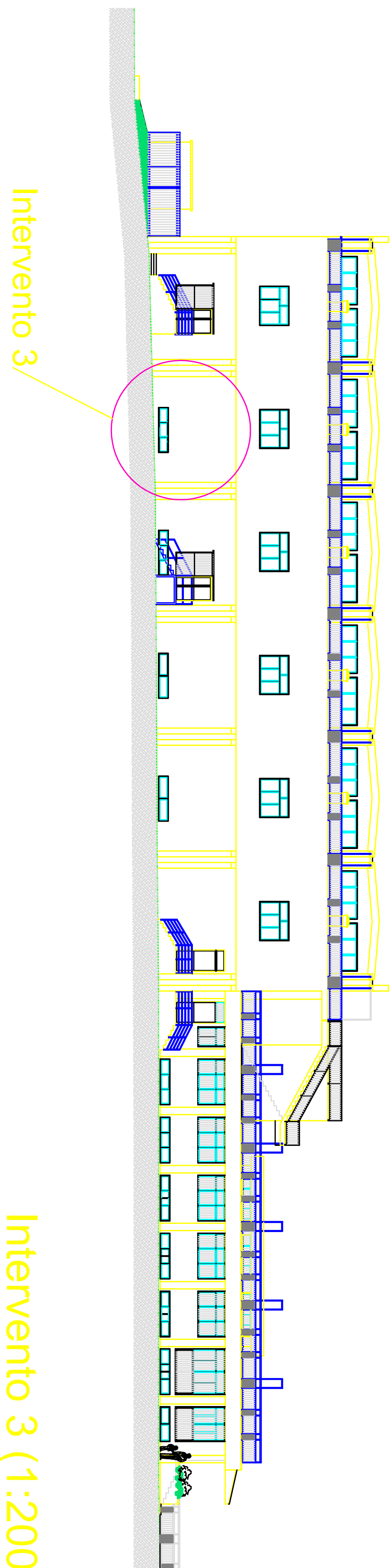
Intervento 2 (1:20)
Parapetto di protezione
percorso di evacuazione



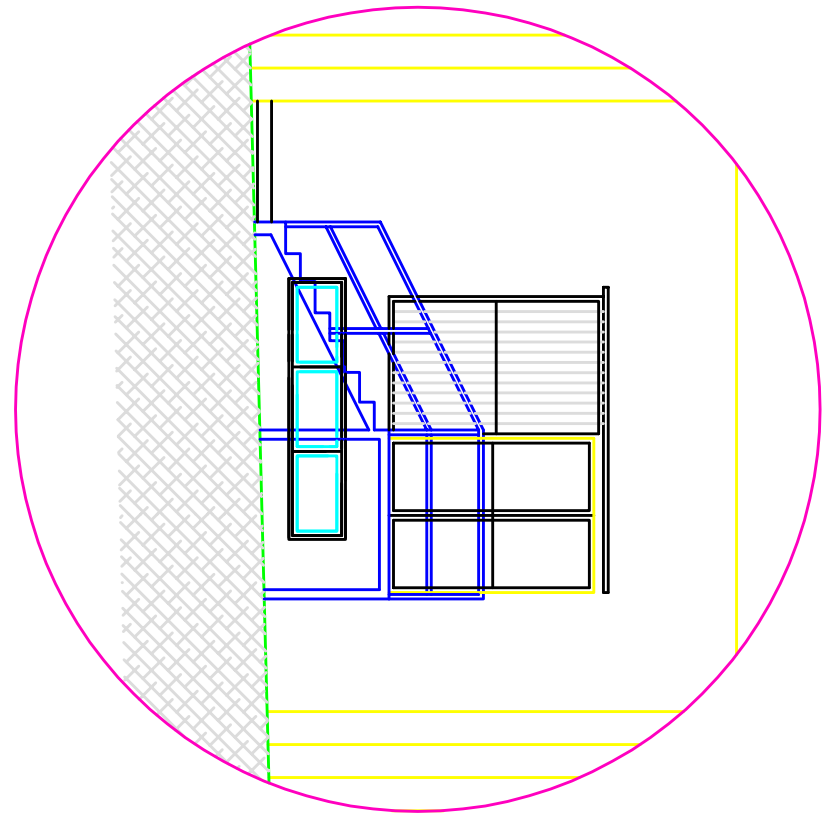
Intervento 3 (1:100)
Nuova uscita di sicurezza



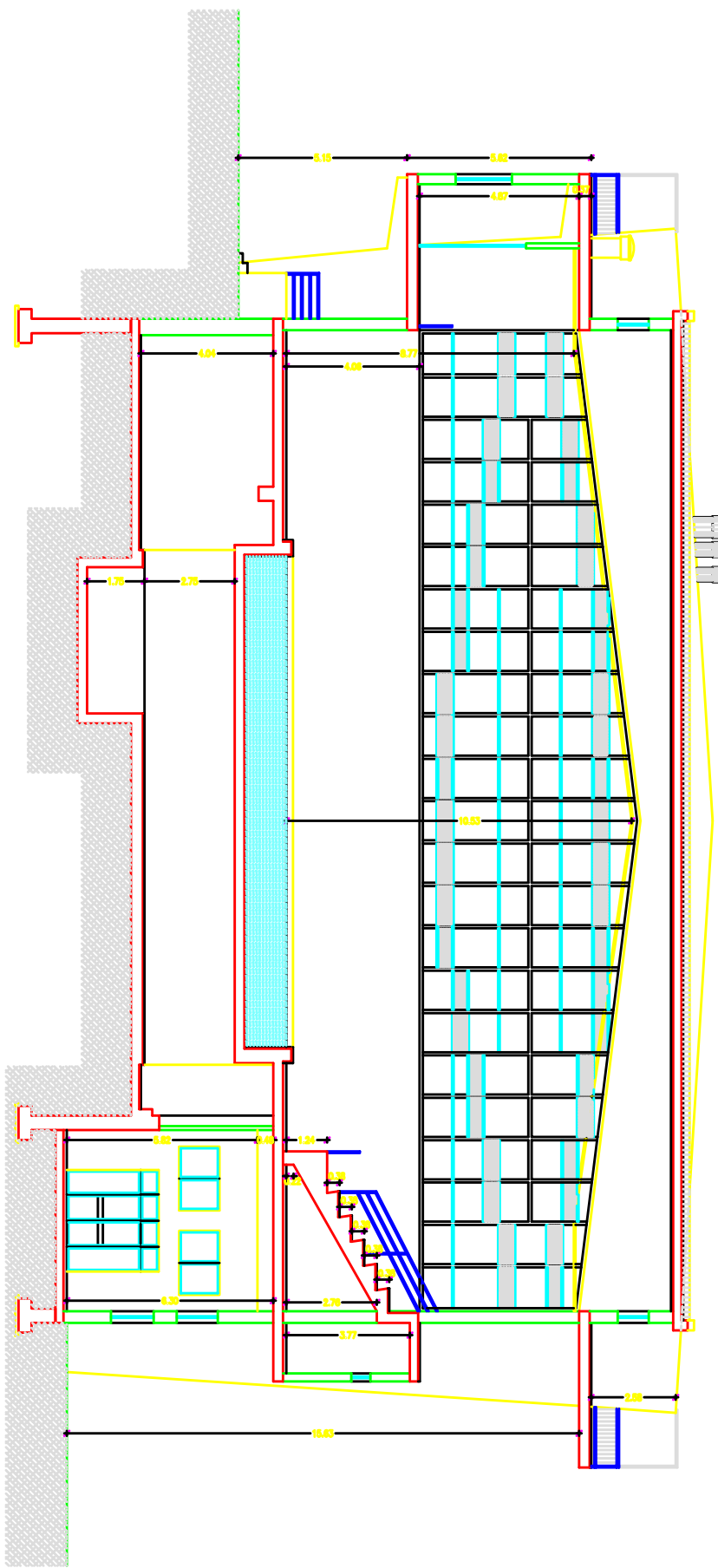
PROSPETTO EST (1:200)



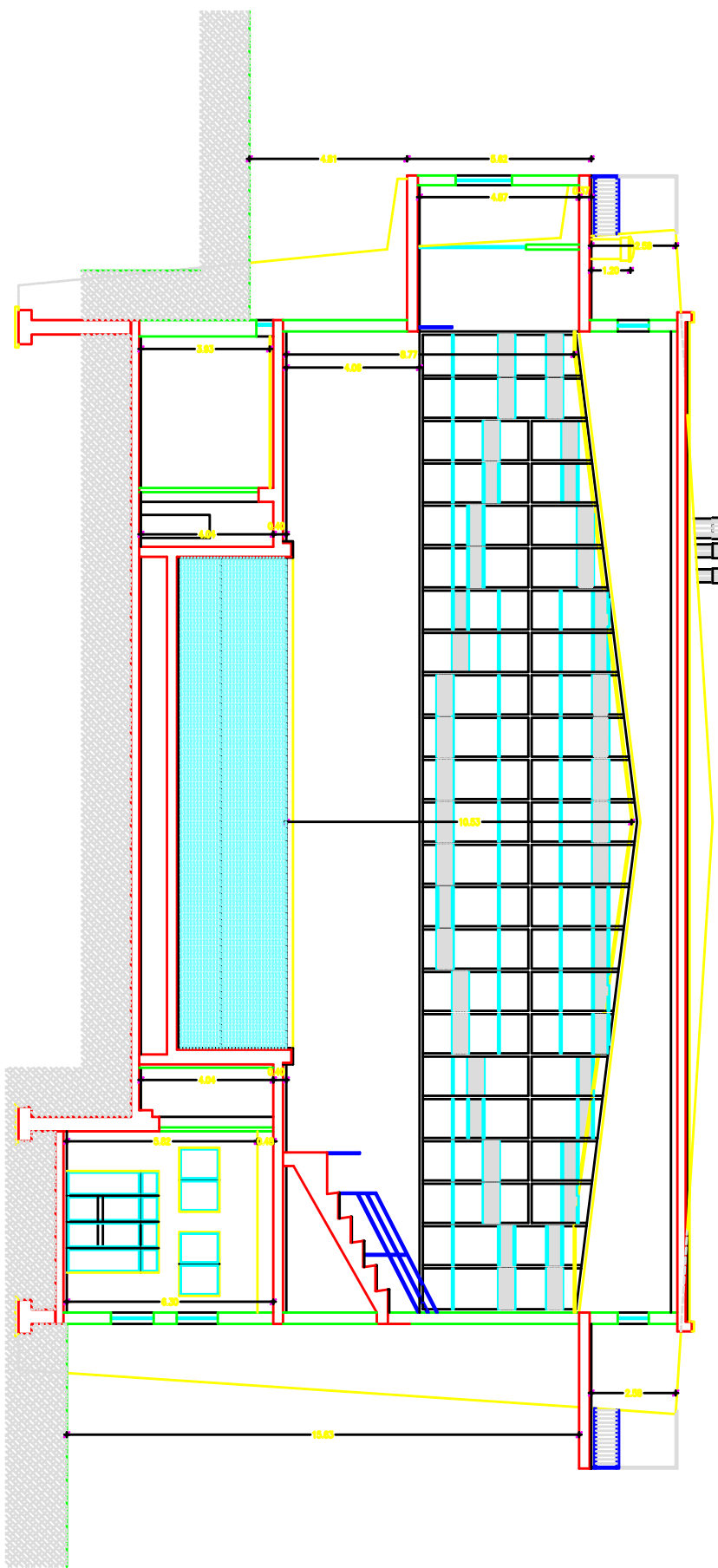
Intervento 3 (1:200)
Nuova uscita di sicurezza



SEZIONE A-A (1:200)



SEZIONE B-B (1:200)



SEZIONE C-C (1:200)

